

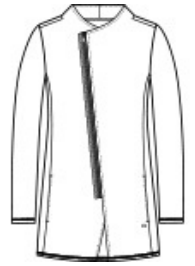


Transition easily between a corporate look and afterhours style in this double-knit piece that has OGIO edge.

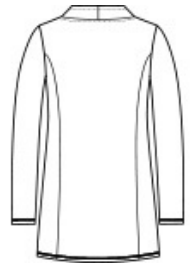
- 11.4-ounce, 52/45/3 cotton/poly/spandex fleece
- OGIO heat transfer label for tag-free comfort
- Black grosgrain detail at zipper
- Asymmetrical metal molded zipper with debossed O on zipper pull
- Matte black debossed O metal badge on front left hem
- Longer tunic length

CARE INSTRUCTIONS

Machine wash with like colors. Only non-chlorine bleach, when needed. Tumble dry low. Cool iron, if necessary.

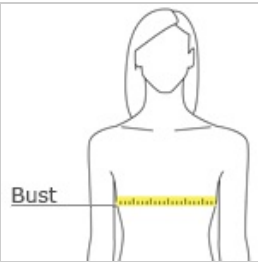


front



back

HOW TO MEASURE



BUST

Measure under the arm and around the fullest part of the bust with arms down, keeping tape horizontal.

SIZE CHART

	XS	S	M	L	XL	2XL	3XL	4XL
Size	2	4/6	8/10	12/14	16/18	20/22	24/26	28/30
Bust	32-34	35-36	37-38	39-41	42-44	45-47	48-51	52-55

COLOR INFORMATION



Blacktop
Heather
PMS BLACK C



Petrol Grey
Heather
PMS COOL GREY
10C