



New Era® Slub Twist Polo NEA301



New Era puts a twist on the traditional polo with this slub style that's super soft and has depth and texture.

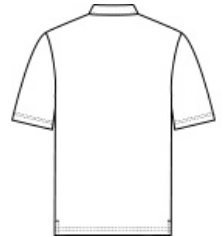
- 6-ounce, 60/40 cotton/poly slub jersey
- Self-fabric collar
- Natural-colored twill neck taping
- Heat transfer label for tag-free comfort
- 3-button placket
- Embroidered New Era flag logo on left sleeve
- Side vents

CARE INSTRUCTIONS

Machine wash cold with like colors. Do not use fabric softener. Only non-chlorine bleach when needed. Tumble dry low. Remove promptly. Cool iron if necessary. Do not dry clean.

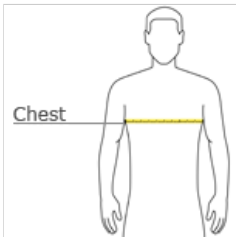


front



back

HOW TO MEASURE



CHEST WIDTH

Measure under the arm and around the fullest part of the chest with arms down, keeping tape horizontal.

SIZE CHART

	XS	S	M	L	XL	2XL	3XL	4XL
Chest	32-34	35-37	38-40	41-43	44-47	48-51	52-56	57-61

COLOR INFORMATION



Black Twist
PMS NTR BLACK CPMS 567C



Dark Green Twist



Shadow Grey Twist
PMS COOL GREY
10C



True Navy Twist
PMS 533C